



Alexandra Drive, SE19 | £1,850 Per Calendar  
Month

02087029333  
crystalpalace@pedderproperty.com

**pedder**  
We live local



# In General

- First floor conversion
- Split-level
- Two bedrooms
- Private rear garden via side gate
- Open plan kitchen
- Available mid-April
- Part-furnished
- Close to Gipsy Hill train station

# In Detail

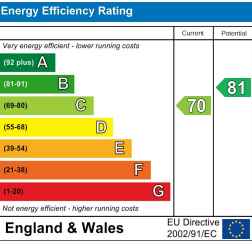
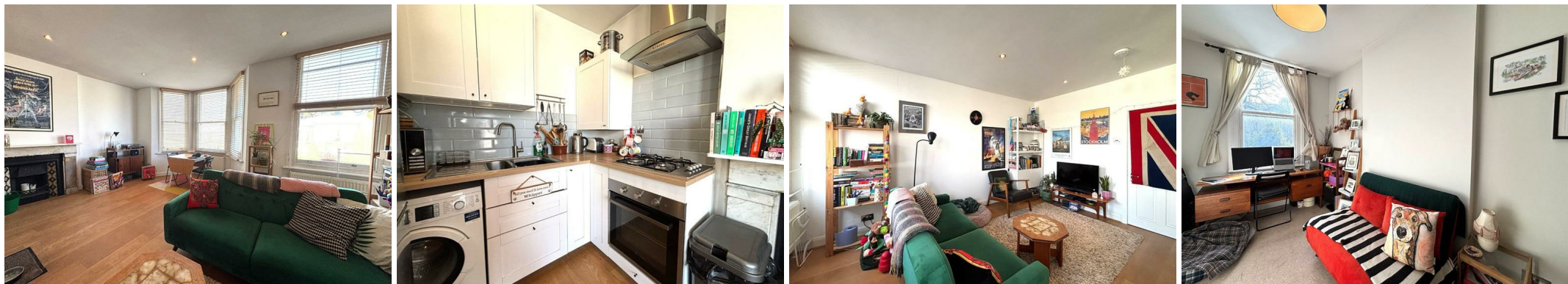
A well-proportioned first floor two double bedroom split-level conversion with garden in Upper Norwood to rent.

Finished to a good standard throughout and comprises semi open plan kitchen / spacious reception room with dining space and double bedroom to the upper level of the property, with a second bedroom (fitted wardrobes included) and bathroom with shower above bath on the lower level to the rear. Complete with a private rear garden (access downstairs via side gate to building).

Alexandra Drive, SE19 is a prime residential road offering easy access to the transport links of Gipsy Hill train station (Victoria) and the many local amenities, boutique shops, pubs and restaurants of the Crystal Palace Triangle.

The perfect rental for a couple or two professional sharers seeking a contemporary yet cosy home.

EPC: C | Council Tax: C | Offered Part-furnished | Available mid-April | HD: £426.92 | SD: £2,134.61



Pedder Property Ltd trading as Pedder for themselves and for the vendor/landlord of this property whose agents they are, give notice that (1) these particulars do not constitute any part of an offer or contract, (2) all statements contained within these particulars are made without responsibility on the part of Pedder or the vendor/landlord, (3) whilst made in good faith, none of the statements contained within these particulars are to be relied upon as a statement of representation or fact, (4) any intending purchaser/tenant must satisfy him/herself by inspection or otherwise as to the correctness of each of the statements contained within these particulars, (5) the vendor/landlord does not make or give either Pedder or any person in their employment any authority to make or give representation or warranty whatsoever in relation to this property.

